



2 Lombard Street Balgowlah, NSW



3



3



1

A Tasteful Fusion Of Classic And Contemporary, Perfect North Aspect

The flawless transformation of this 1930 California Bungalow beauty perfectly balances timeless elegance, high-end contemporary design and flexible tri level family layout. Holding an elevated rear setting with a perfect northerly orientation, which captures wide open green views that reach the ocean as a mesmerising backdrop to daily life. Its leafy street is located with every convenience moments from the door, placed just 150m to Stockland Balgowlah, cafes, express CBD buses, day-to-day amenities and 700m walk to Manly West Public School.

- Solid double brick and sandstone, tightly held, first time offered in 20 years
- Elevated 270-degree views spanning from Frenchs Forest to North Steyne Manly reminder to the past

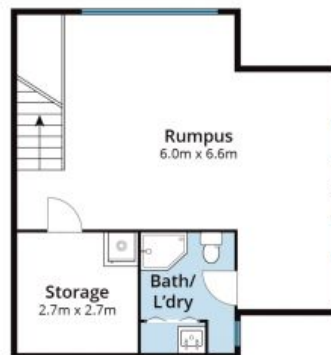
Council Rates: \$551.00 p/q
Water Rates: \$177.00 p/q

Angus White

0425 277 221

Tim O'Neill

0422 925 019



Whilst [barrm.com.au](http://www.barrm.com.au) has made every attempt to ensure the accuracy of the floor plan contained here, measurements are approximate and no responsibility is taken for any error, omission, or mis-statement. This plan is for illustrative purposes only.

2 Lombard Street, Balgowlah
2 Lombard Street **Balgowlah, NSW**